

REMARK

Pan & Tilt (V2.0)

Combination  

COLOR DOME CAMERA

PTD-302 User's guide



- Read this user's guide carefully before any installation for safety and operation of product.

- Features and specifications are subject to change without any notice for functional improvement

Summary & Special features

1. Summary

The surveillance direction of PT-102 is turned freely left ,right ,up and down.

PT-101 can watch efficiently with light weight, small size.

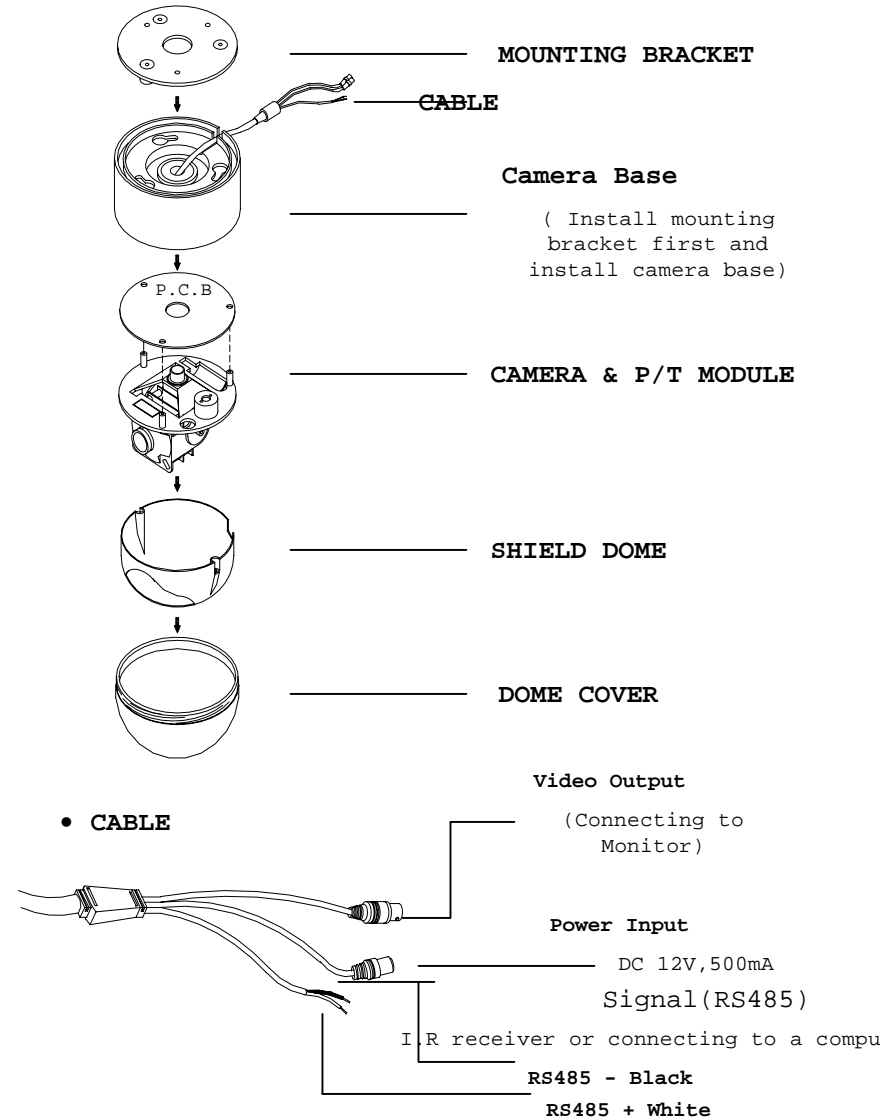
2. Special features

- 1) Small size and Hi-tech appearance.
- 2) Maximum 35°/sec of speedy rotation. (PAN)
- 3) Function of AUTO PAN that has 16-step of variable rotation angle is automatically stopped after operating for 10minues.
- 4) Anti-impact cover (POLY CABONATE).
- 5) Convenient One-Touch Mount Bracket
- 6) Control operation with RS-485 telecommunication protocol.

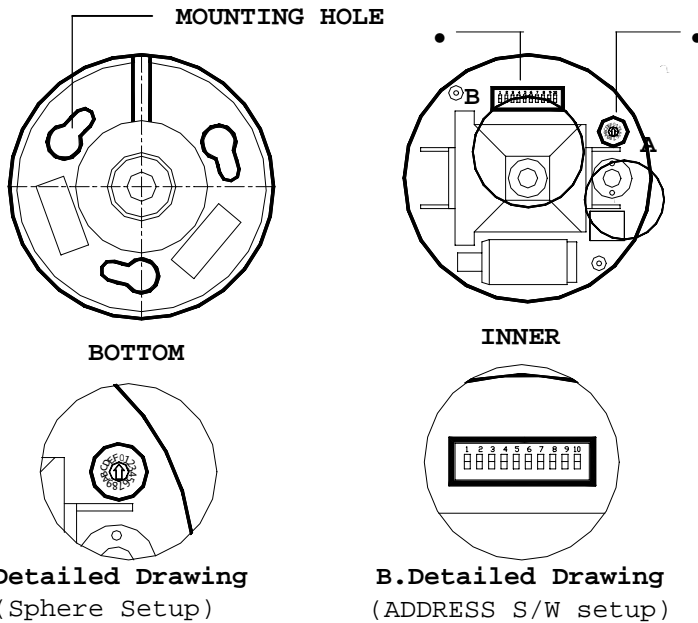
(RS-232 is Option.)

- 7) Connectable various DVR
- 8) Easy control with using remote controller

Part name and feature 1



Part name and feature 2



•Set up Auto Pan Sphere

- There are 1 to 16 step of set up sphere, fixable 20° for 1 step.
- Goods are shipped on 16 step(-320°), do step in moderation.

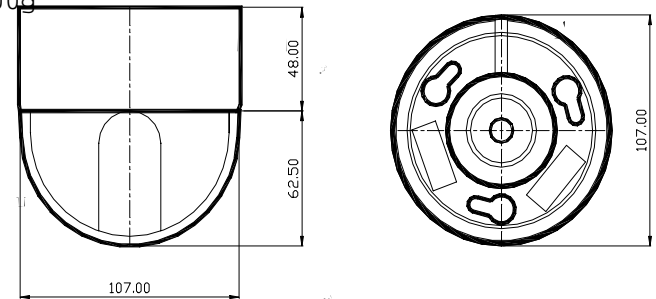
2. Set Camera No. (Address, Last Grade, Free Set)

- S/W No.1 to No. 8 is for set up the Address.
- S/W No.9 is for set up the Free Set.
- S/W No.10 is for set up the Last Grade.

*See page7, function description.

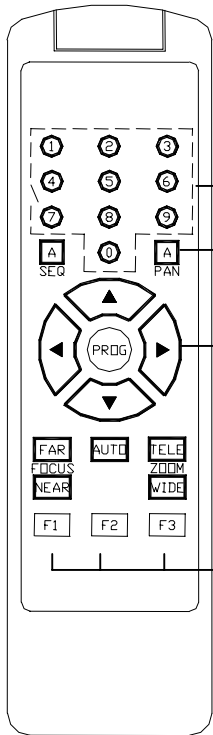
Specification

Power input	DC 12V, 500mA
Application environment	Indoor
Operation of degree	Pan - 320° Maximum
	Tilt - 90° Maximum
Operation speed of PT	Pan - 35°/sec Tilt - 30°/sec
Loading capacity weight	100g Maximum
Housing material	High impact resistance plastic
Weight	About 500g



Drawing

Remote controller operation



RC-100

• Camera selection

Use No.1 to No9 to select settled address on PT-102.

• Auto Pan

On Auto Pan feature of selected camera

- Auto pan is stopped by press Left, right key.
- Auto Pan is automatically stopped after operating for 10 minutes.

• Direction control key

Direction control key for selected camera

• 4.Extension of Address

F1 : UNIT 10

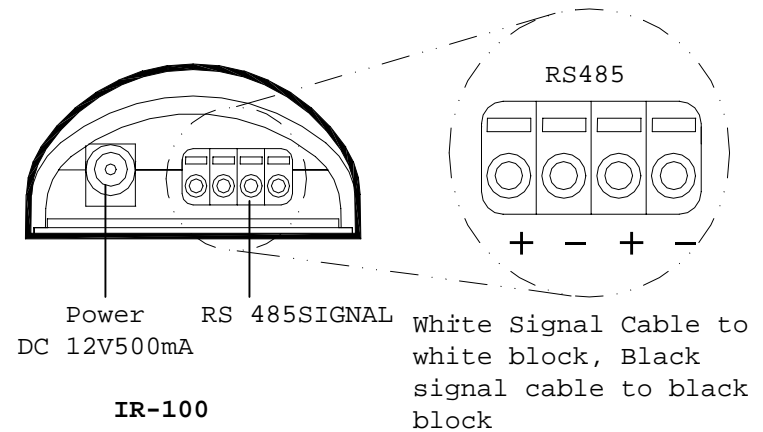
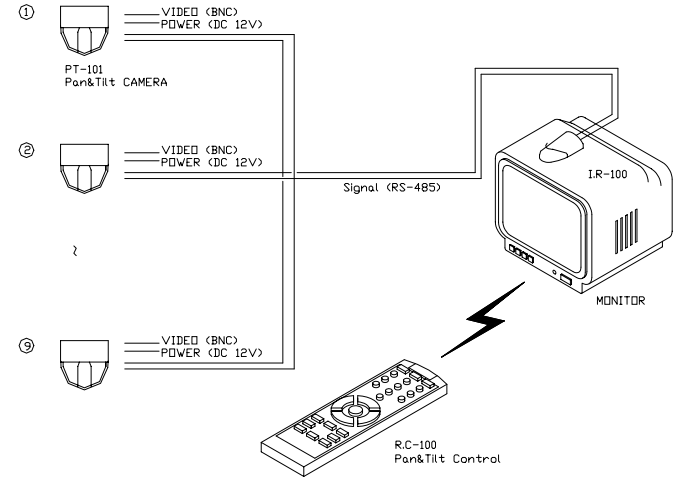
F2 : UNIT 20

F3 : UNIT 30

ex) Address 17 : F1 + No.7

- All other keys are disable in PT-102 feature.

Cable connection

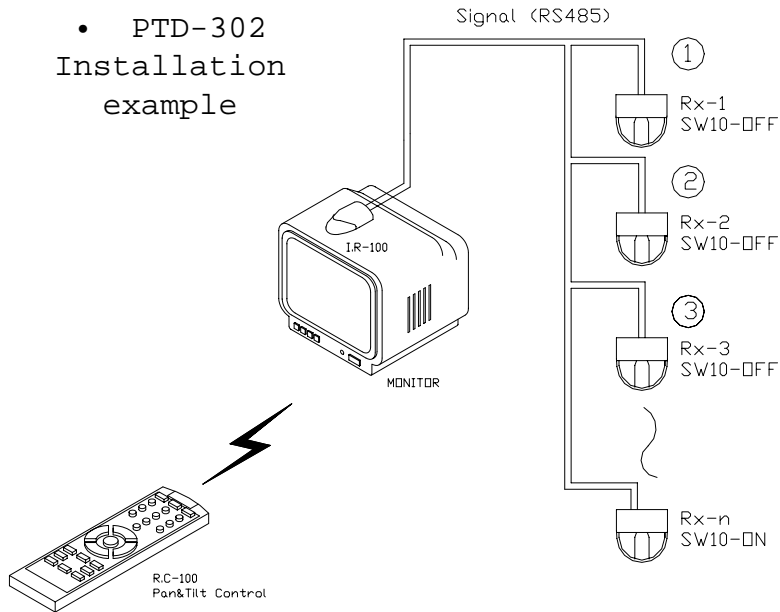


DIP S/W Establishment

- SW 1 to SW 8 is S/W to set up the address.
- SW 9 is S/W to select Free Set.
- SW10 is S/W to adjust impedance of control cable.

Please turn on the last Rx of S/W, as below picture.

• PTD-302 Installation example



DIP S/W

•S/W No.9 is option.

• The last grade of Rx in S/W No.10 must be turned on.

Address	SW 1	SW 2	SW 3	SW 4	SW 5	SW 6	SW 7	SW 8	SW 9	SW 10
1	ON	OFF	OFF	OFF	OFF	OFF	OFF	OFF	OFF	OFF
2	OFF	ON	OFF	OFF	OFF	OFF	OFF	OFF	OFF	OFF
3	ON	ON	OFF	OFF	OFF	OFF	OFF	OFF	OFF	OFF
4	OFF	OFF	ON	OFF	OFF	OFF	OFF	OFF	OFF	OFF
5	ON	OFF	ON	OFF	OFF	OFF	OFF	OFF	OFF	OFF
6	OFF	ON	ON	OFF	OFF	OFF	OFF	OFF	OFF	OFF
7	ON	ON	ON	OFF	OFF	OFF	OFF	OFF	OFF	OFF
8	OFF	OFF	OFF	ON	OFF	OFF	OFF	OFF	OFF	OFF
9	ON	OFF	OFF	ON	OFF	OFF	OFF	OFF	OFF	OFF
10	OFF	ON	OFF	ON	OFF	OFF	OFF	OFF	OFF	OFF
11	ON	ON	OFF	ON	OFF	OFF	OFF	OFF	OFF	OFF
12	OFF	OFF	ON	ON	OFF	OFF	OFF	OFF	OFF	OFF
13	ON	OFF	ON	ON	OFF	OFF	OFF	OFF	OFF	OFF
14	OFF	ON	ON	ON	OFF	OFF	OFF	OFF	OFF	OFF
15	ON	ON	ON	ON	OFF	OFF	OFF	OFF	OFF	OFF
16	OFF	OFF	OFF	OFF	ON	OFF	OFF	OFF	OFF	OFF
17	ON	OFF	OFF	OFF	ON	OFF	OFF	OFF	OFF	OFF
18	OFF	ON	OFF	OFF	ON	OFF	OFF	OFF	OFF	OFF
19	ON	ON	OFF	OFF	ON	OFF	OFF	OFF	OFF	OFF
20	OFF	OFF	ON	OFF	ON	OFF	OFF	OFF	OFF	OFF
21	ON	OFF	ON	OFF	ON	OFF	OFF	OFF	OFF	OFF
22	OFF	ON	ON	OFF	ON	OFF	OFF	OFF	OFF	OFF
23	ON	ON	ON	OFF	ON	OFF	OFF	OFF	OFF	OFF
24	OFF	OFF	OFF	ON	ON	OFF	OFF	OFF	OFF	OFF
25	ON	OFF	OFF	ON	ON	OFF	OFF	OFF	OFF	OFF
26	OFF	ON	OFF	ON	ON	OFF	OFF	OFF	OFF	OFF
27	ON	ON	OFF	ON	ON	OFF	OFF	OFF	OFF	OFF
28	OFF	OFF	ON	ON	ON	OFF	OFF	OFF	OFF	OFF
29	ON	OFF	ON	ON	ON	OFF	OFF	OFF	OFF	OFF
30	OFF	ON	ON	ON	ON	OFF	OFF	OFF	OFF	OFF
31	ON	ON	ON	ON	ON	OFF	OFF	OFF	OFF	OFF
32	OFF	OFF	OFF	OFF	OFF	ON	OFF	OFF	OFF	OFF
33	ON	OFF	OFF	OFF	OFF	ON	OFF	OFF	OFF	OFF
34	OFF	ON	OFF	OFF	OFF	ON	OFF	OFF	OFF	OFF
35	ON	ON	OFF	OFF	OFF	ON	OFF	OFF	OFF	OFF
36	OFF	OFF	ON	OFF	OFF	ON	OFF	OFF	OFF	OFF
37	ON	OFF	ON	OFF	OFF	ON	OFF	OFF	OFF	OFF
38	OFF	ON	ON	OFF	OFF	ON	OFF	OFF	OFF	OFF
39	ON	ON	ON	OFF	OFF	ON	OFF	OFF	OFF	OFF